



Maryland Department of Education Working Group

Wednesday, October 27, 2021

Agenda

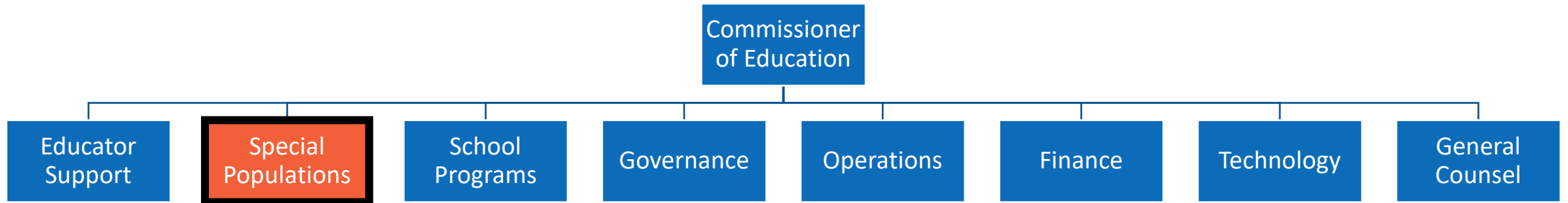
Brief Introduction to Texas

State Laws & Policies

Division Initiatives

Questions

Texas Education Agency Structure



Division of English Learner Support



Julie Lara
Director



Amy Johnson
Bilingual Coordinator



Xóchitl Anabel Rocha
Dual Language Coordinator



Carlene Thomas
ESL Coordinator



Rickey Santellana
Title III Coordinator

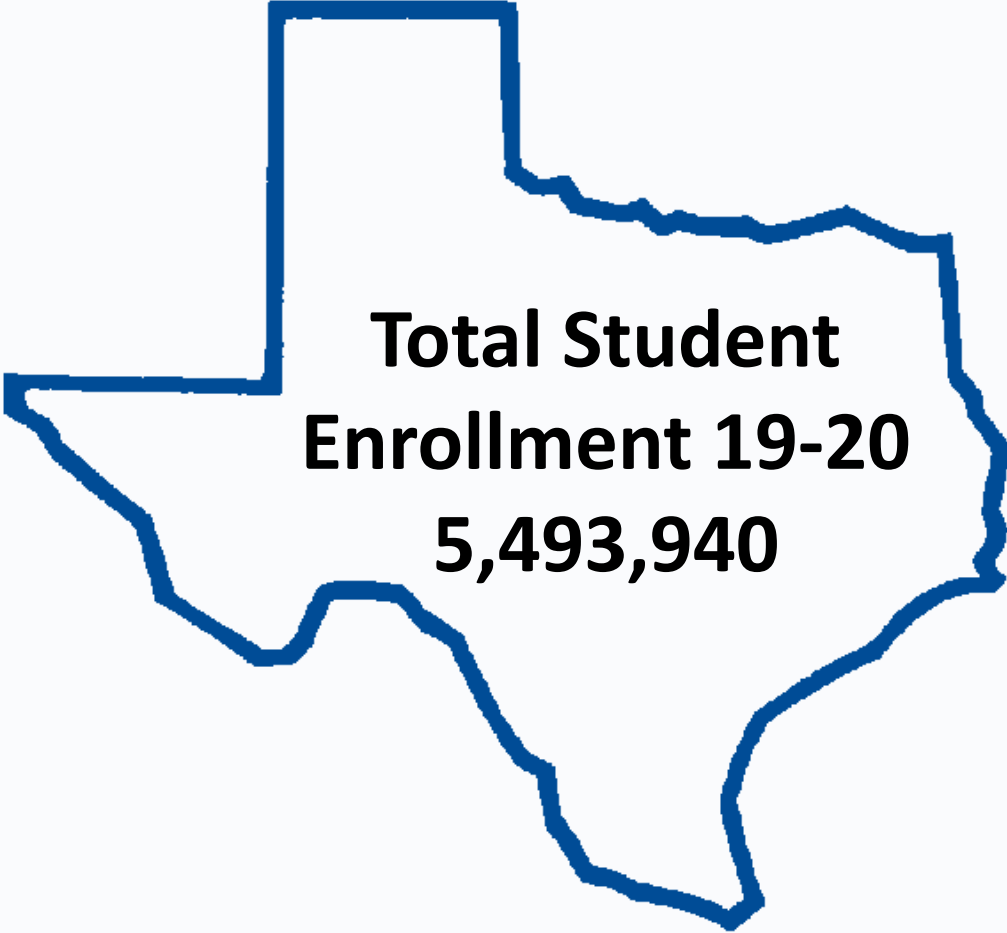


David Miralrio
LEE Public Policy Fellow



Johnny Solis III
LEE Public Policy Fellow

Current landscape of English Learners in Texas



**Total Student
Enrollment 19-20
5,493,940**



1,113,536 students



EL/Sped – 10.2%
of total EL population



EL/GT – 3.9%
of total EL population

[Enrollment in Texas Public Schools, 2019-2020, TEA
PEIMS Standard Report – ELs by Category and Grade](#)





Texas Laws and Policies

Texas as a pioneer in bilingual education

- The Bilingual Education and Training Act became law in 1973, mandating Bilingual Education for grades K-5/6 if an LEA has 20 students in the district with the same language.
- Texas Administrative Code, Chapter 89 outlines additional requirements to ensure equal educational opportunities for emergent bilingual students:

It is the policy of the state that every student in the state who has a primary language other than English and who is identified as an English learner shall be provided a full opportunity to participate in a bilingual education or English as a second language (ESL) program, To ensure equal educational opportunity, each school district shall:

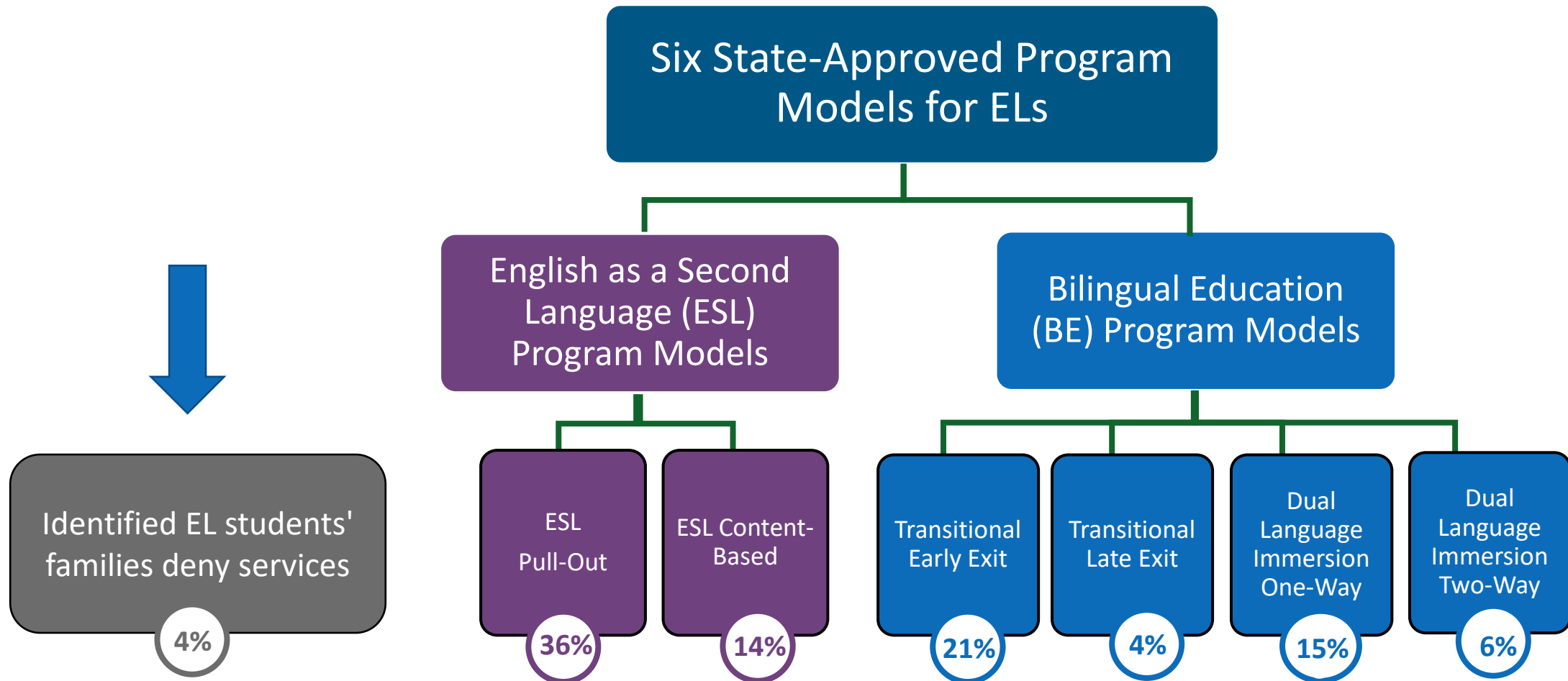
identify English learners based on criteria established by the state;

provide bilingual education and ESL programs, as integral parts of the general program

seek appropriately certified teaching personnel to ensure that English learners are afforded full opportunity to master the essential knowledge and skills required by the state; and

assess achievement for essential knowledge and skills to ensure accountability for English learners and the schools that serve them

Texas Program Models for Serving English Learners



[TAC §89.1210 \(c\) and \(d\)](#)

HB 3 (2019) Bilingual Education Allotment Key Points



Additional funding (0.05 or \$308) for EB/ English learners and non-EB in a bilingual education program implementing dual language immersion.



55% of BEA funds must be used in providing bilingual education or special language (ESL) programs and spending definitions have been **expanded**.



TEA will expand the **tools and resources** available for dual language immersion.

Changes to Bilingual Education Allotment

BEFORE



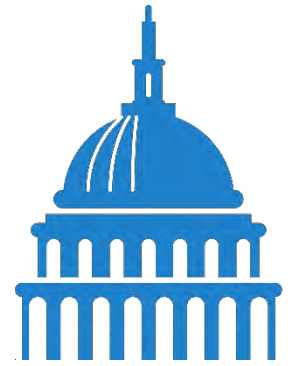
- Funding for any LEP student in any language program
($0.1 \times \text{Basic Allotment for LEP} = \514)

AFTER



- Funding for any LEP students in any language program
($0.1 \times \text{BA for LEP} = \616)
- For LEP students served in a dual language immersion program, additional funding ($0.15 \times \text{BA for LEP in dual language} = \924)
- For non-LEP students served in a two-way dual language immersion program, additional funding
($0.05 \times \text{BA for non-LEP} = \308)

87th Texas Legislation Updates



Transitioning to *Emergent Bilingual* in Texas

Texas passed **Senate Bill 2066** replacing the term “Limited English Proficient” with “Emergent Bilingual” in Texas Education Code (TEC) effective September 1, 2021. USDE continues to use the term “English learner” in federal guidance, so either term could be used depending on the context of the guidance or resource. The English Learner Support Division is in the process of drafting revisions to TAC 89 that will include the new terminology as well as other proposed revisions. The Texas Register process does provide a mandatory 30-day comment period for stakeholders to weigh in on the proposed language. TEA will inform stakeholders when the open comment period begins

Strategic Plan for Emergent Bilinguals

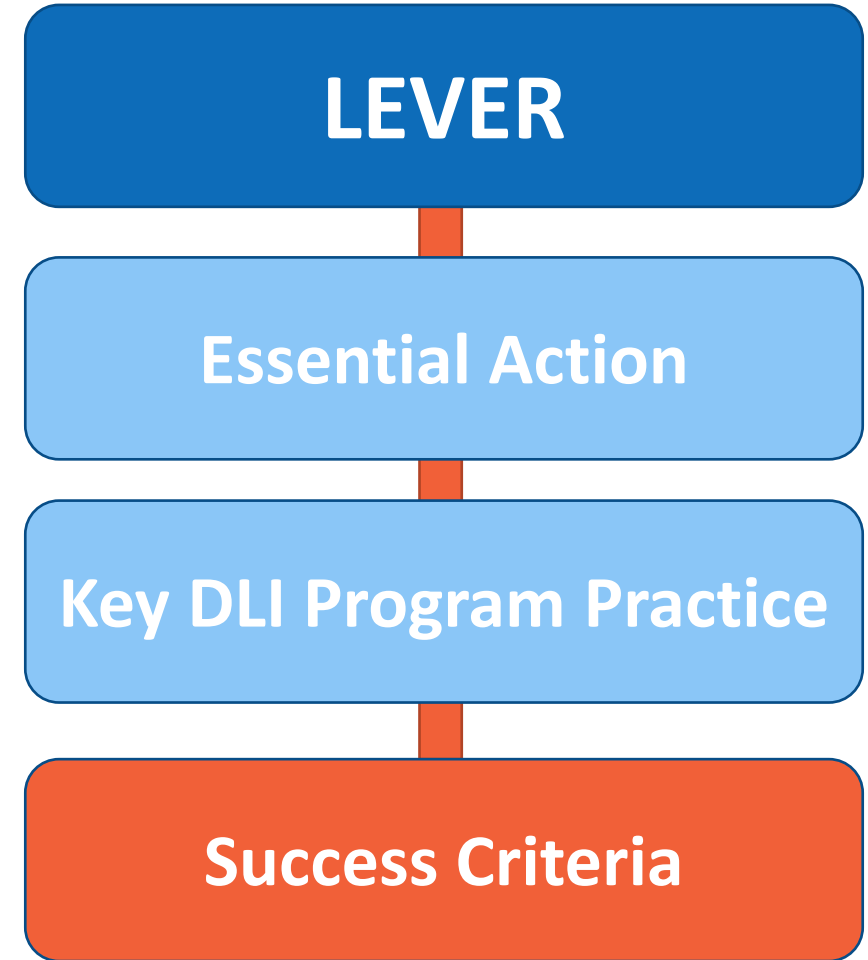
Texas passed **Senate Bill 560** which requires TEA to develop a strategic plan for Emergent Bilinguals in coordination with Texas’ Higher Education and Workforce Commissions to increase the number of bilingual certified teachers and increase the effective implementation of dual language one-way and two-way programs. The agency is also charged with increasing awareness of the benefits of dual language programs for families and school districts.



TEA

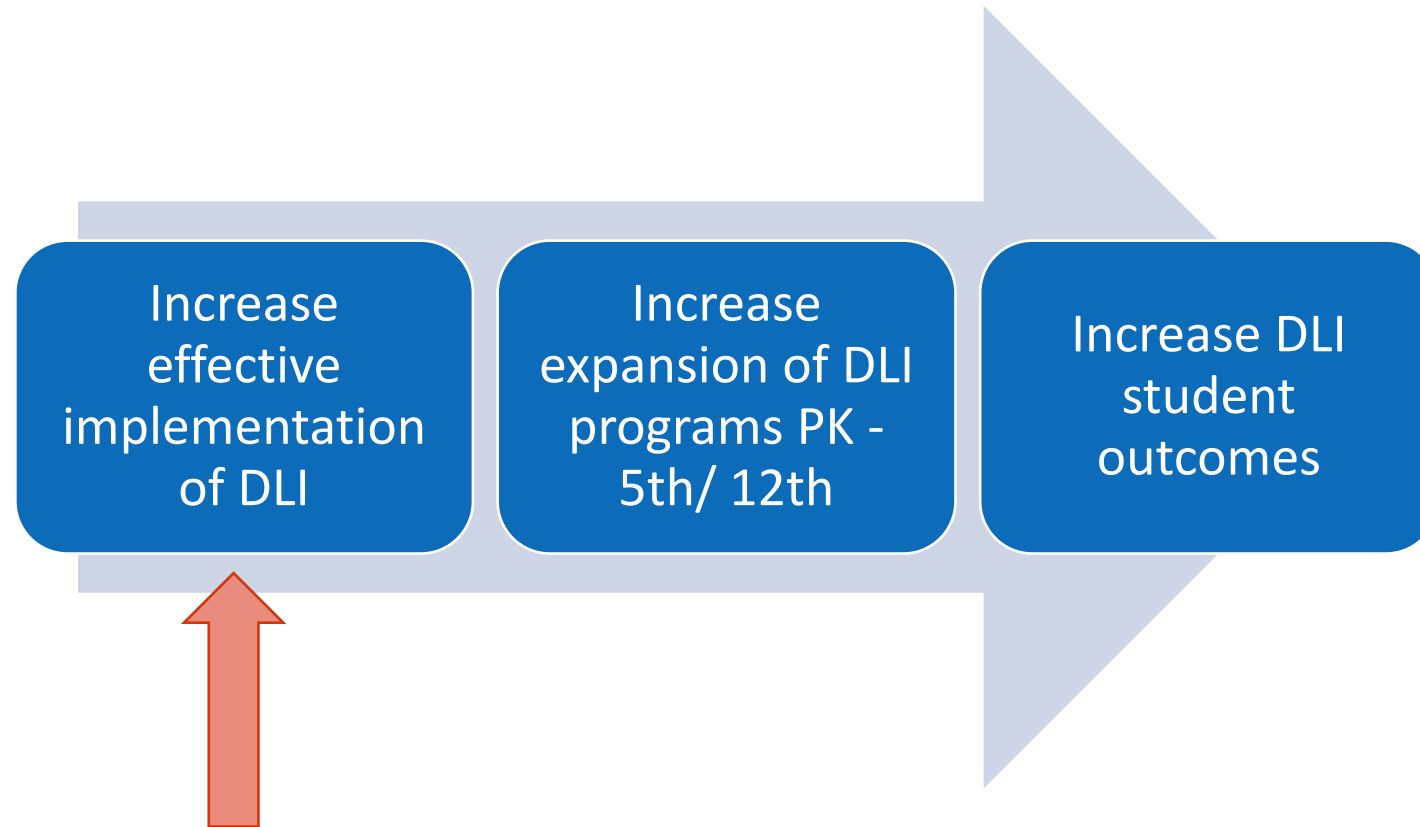
Division Initiatives

The Texas Effective Dual Language Immersion Framework



TxEDLIF Pilot

- Year 1 Pilot will begin this 2021-2022 school year.
 - at 15 campuses state-wide



Family Empowerment Initiative – Overview

To understand the unique landscape of community

To promote meaningful partnerships between families and ELs and schools

To include marketing and promotional materials, in a variety of languages

Community Survey & Asset Mapping

Outreach Strategies

Engagement Strategies

Execution Plans

Methods of Evaluation

To increase awareness and meet regional needs

To evaluate the efficacy and scope of reach of framework

Family Empowerment Initiative - Update

ESC Region	Percent and number of ELs in the Region	Total # of LEAs in the Region	Spring '22 Pilot EL Empowerment LEAs
ESC 11	17.0% = 104,899	92	4
ESC 6	14.6% = 31,099	66	3
ESC 18	14.2% = 14,714	40	2
ESC 7	12.4% = 22,475	102	2
ESC 20	12.3% = 62,953	90	4
Totals	236,140	390	15

- Public Engagement Specialists (PESs) have been hired in each of the identified regions
- Scope of work for PESs has been determined and began last week
- Pilot recruitment/outreach will begin in late October

Defining Content-Based Language Instruction (CBLI)

- An integrated approach to language instruction in which **language is developed within the context of content delivery.**
- Applies to all programs for emergent bilingual students (bilingual and ESL).
- Applies to any language of instruction.
- Includes culturally and linguistically sustaining practices (CLSP)





Communities of Practice & Work Groups

Newcomer Community of Practice Participant Data

Composition

- 49 LEAs
- 11 Regions
- 44 Districts; 5 charters; 1 IHE

Demographics

- 345,916 EB students
- 35,424 Immigrant
- 29,904 EB/Immigrant (9%)

Houston ISD (Largest)

- 65,638 EB students
- 9,267 Immigrant
- 13% of EB are immigrant

Argyle ISD (Smallest)

- 119 EB students
- 2 Immigrant
- 0% of EB are immigrant

Immigrant Grade Levels

- 59% in elementary (EE – Grade 5)
- 41% in secondary (Grades 6 – 12)

EB/Immigrant Program

- 33% in bilingual
- 46% in ESL
- 21% under exception/waiver

Biliteracy Instruction in Transitional Programs

Biliteracy Instruction



- Lessons within a unit incorporate both languages
- Explicit connections made between languages
- Students can access knowledge in both languages

ESC Work Groups

Assessment for Biliteracy in DLI

- Purpose: To generate biliteracy assessment resources to monitor the academic language development in partner language and English across all content areas
- Outcomes:
 - Coaching Guide
 - Spanish Proficiency Tool
 - Targeted PD Sessions

Content-Based Language Instruction (CBLI)

- Purpose: To coordinate the development of a comprehensive CBLI Framework with associated resources and tools
- Outcomes:
 - CBLI Quick Guide
 - CBLI TEALearn Course Modules
 - CBLI Framework

Coming
Soon!!



EL Division Resources



ESL CERTIFICATION TRAINING

A new, free online course

**MORE
INFORMATION
AVAILABLE AT:
txel.org**



REGISTER AT: www.txeslprep.org

This free online course accompanies the
previously released ESL Certification
Training Manual available [here](#)



Bilingual Target Language Proficiency Test (BTLPT) 190

- ✓ BTLPT Manual
- ✓ 4 – Interactive Modules

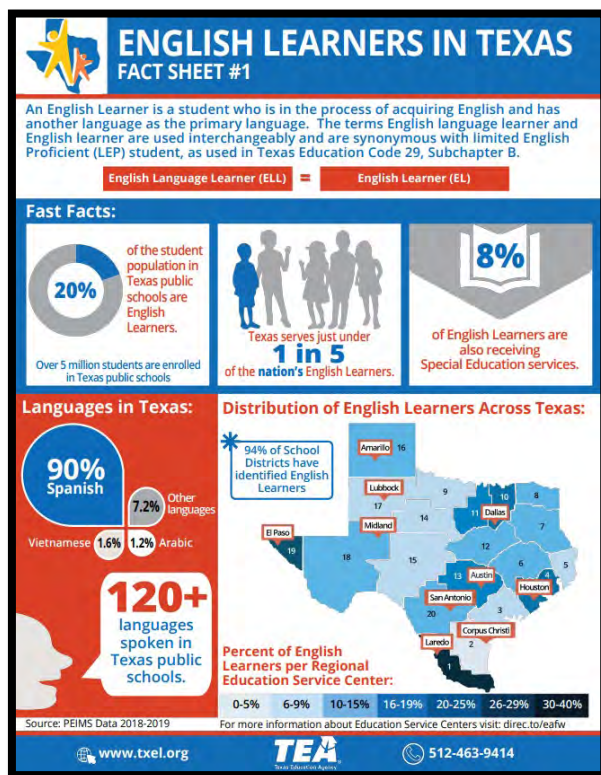
Bilingual Supplemental 164

- ✓ Supplemental 164 Manual
- ✓ 4 – Interactive Modules

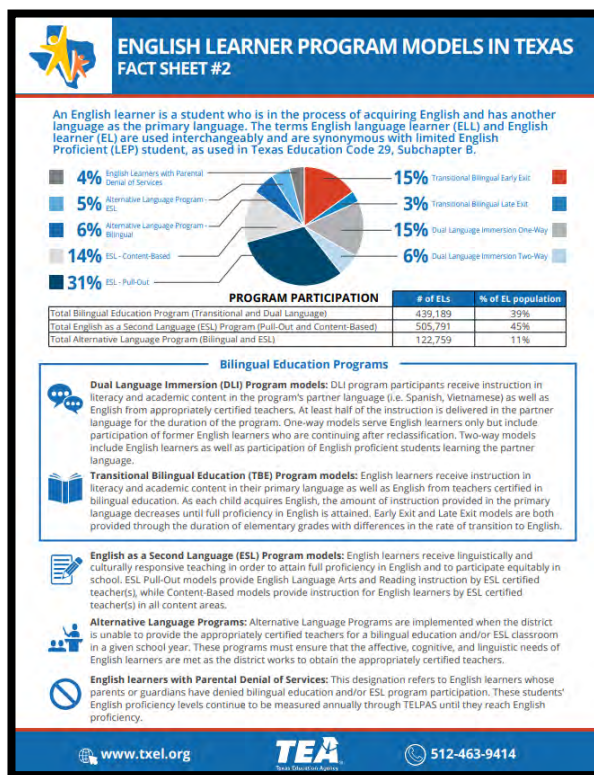
<https://www.txel.org/ProfessionalDevelopment>

Fact Sheets Regarding English Learners in Texas

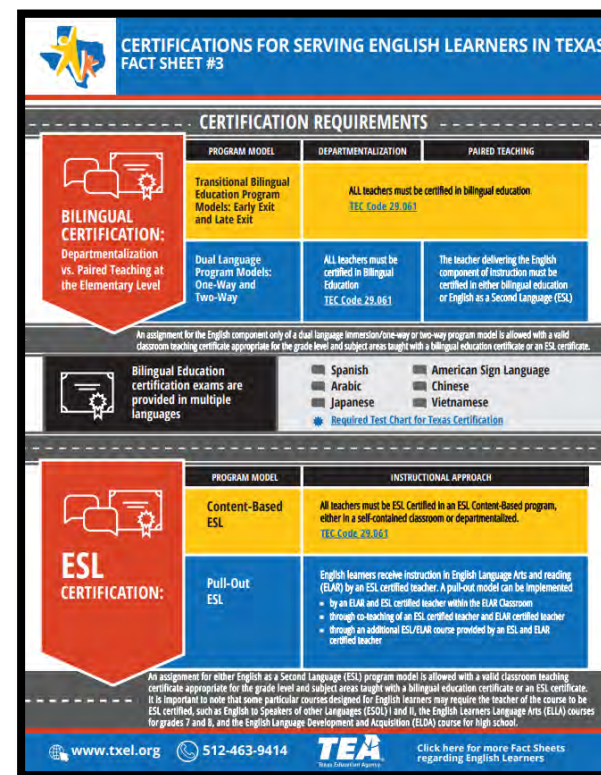
Fact Sheet #1 EL Demographics



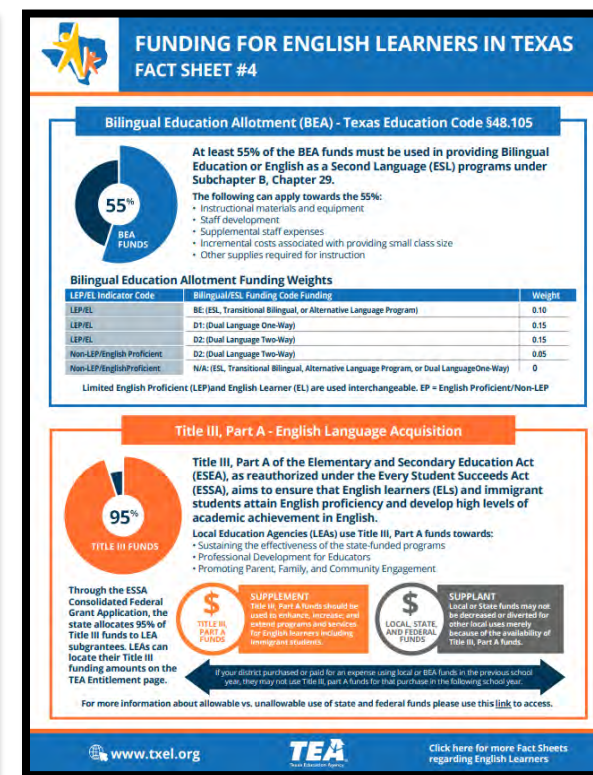
Fact Sheet #2 EL Program Models



Fact Sheet #3 Certification Guidance



Fact Sheet #4 EL Funding Sources





Subscribe Today!

Accessible from a smartphone,
tablet, or computer.



EL Web Portal

Supporting English Learners in Texas

Providing information and resources that are

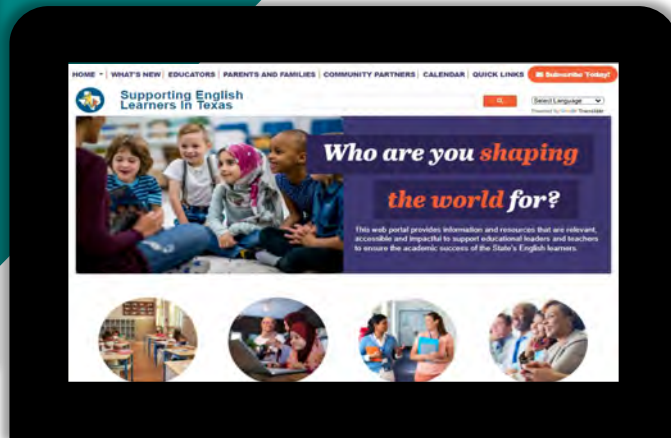
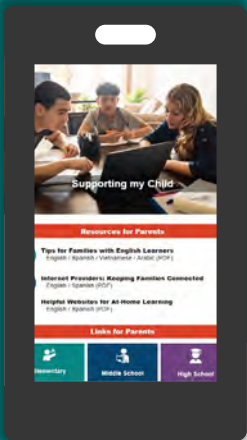
Relevant, Accessible, and Impactful.

[TXEL.org](https://txel.org)



Designed For:

- ✓ Teachers
- ✓ Educational Leaders
- ✓ Families of English Learners
- ✓ English Learners
- ✓ Community Partners



Q&A



Contact Information

English Learner Support Division Julie Lara, Director



Julie.Lara@tea.texas.gov



Txel.org

