



Rhode Island Department of Education (RIDE)

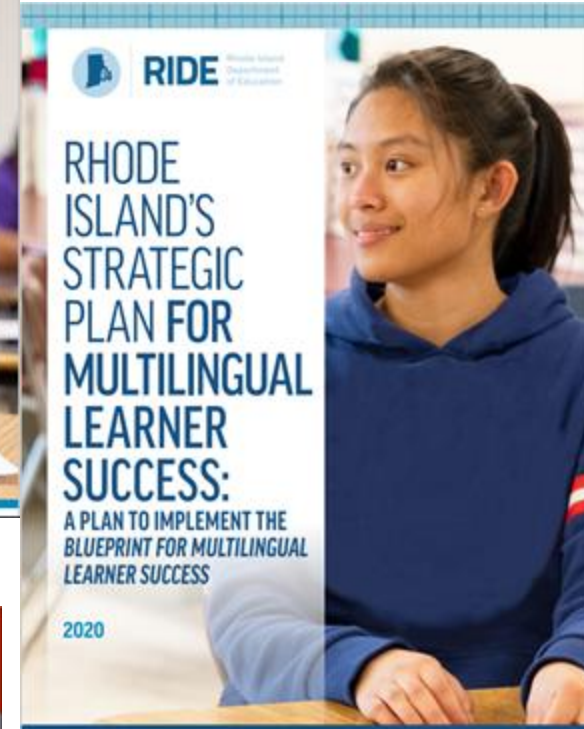
Practical Approach to Support Students with
Interrupted Formal Schooling

Thursday, March 24, 2022

Context of MLL Work in RI

In 2021 RIDE released the

- [Blueprint for MLL Success](#) and the
- [MLL Strategic Plan](#)
 - Extensive stakeholder involvement in development
 - Based on research-based best practices
 - Intended to guide work with MLLs going forward

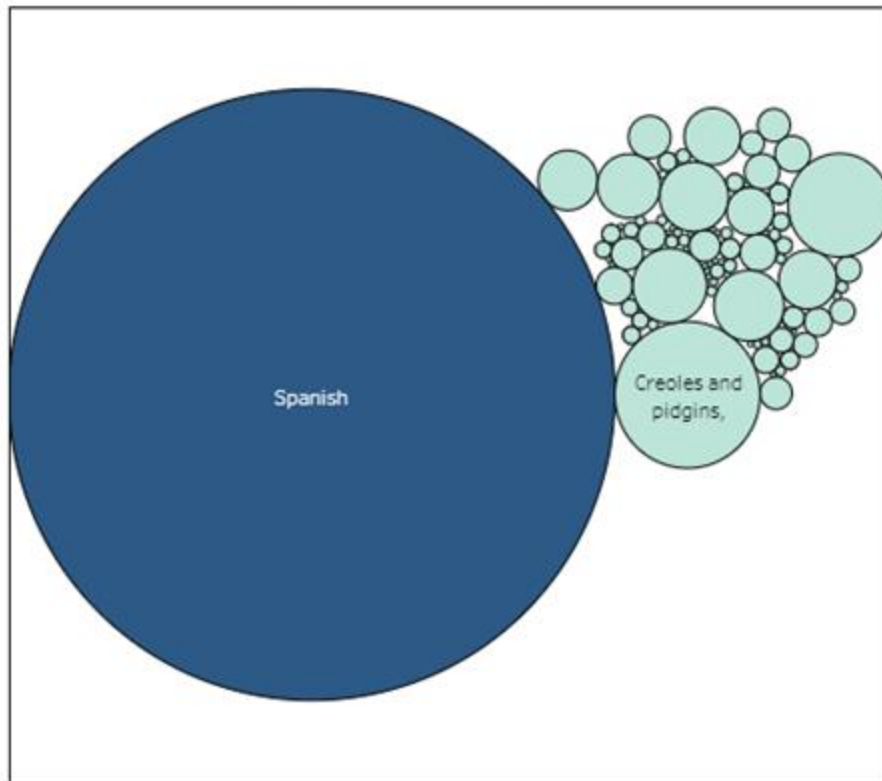


[Video - MLL Blueprint overview](#)

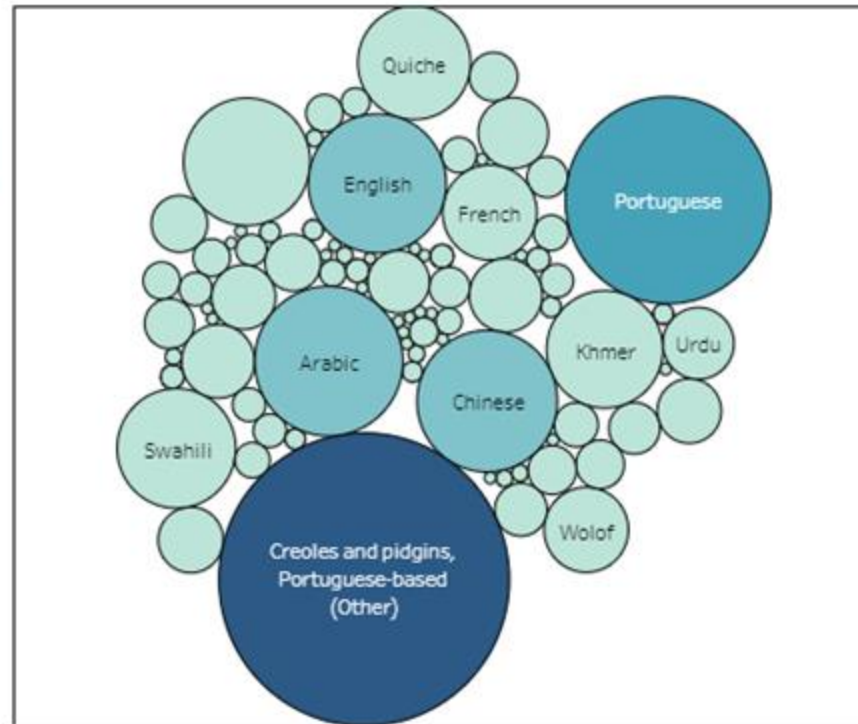
Context of MLL Work in RI

- Three years of longitudinal data about MLLs in Rhode Island

All Home Languages (2020-21)



Detail of Home Languages other than Spanish (2020-21)



2019 – 2020 MLL Ambassadors



2019 – 2020 MLL Ambassadors

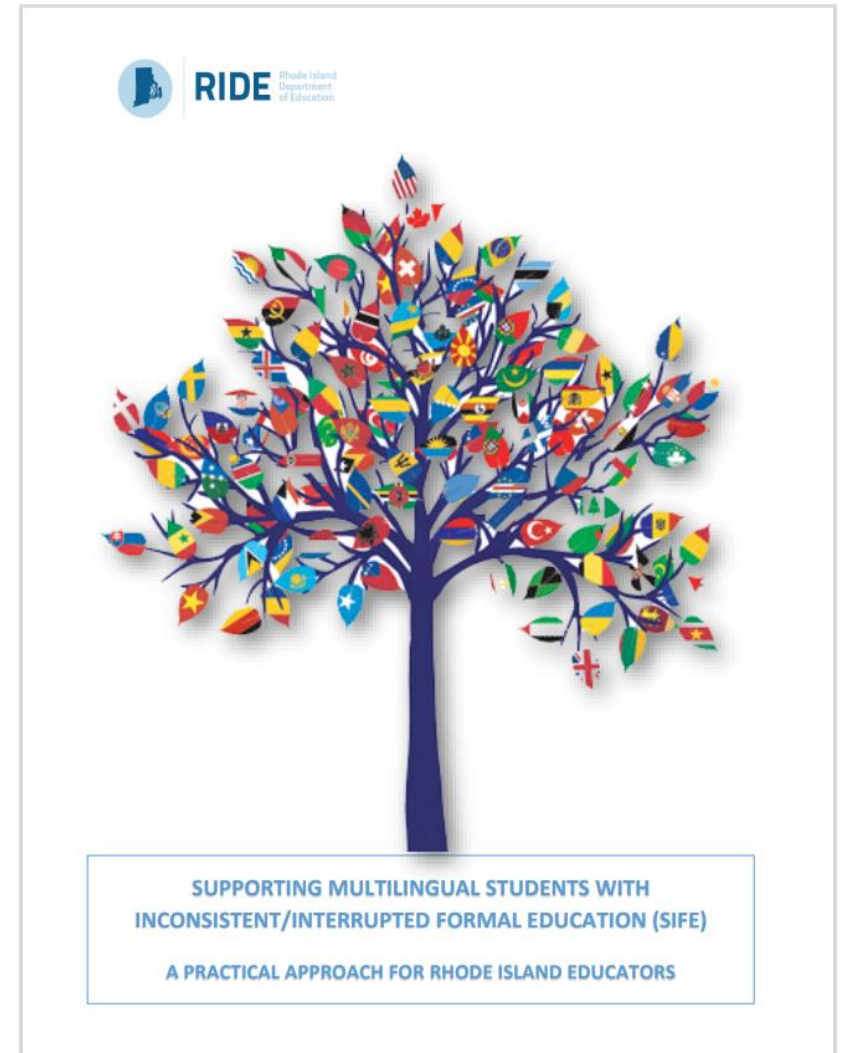
The Ambassadors serve as **policy advisors**. They leverage their expertise to provide feedback and insights to the RIDE MLL core team and their fellow ambassadors.

Ambassadors are **spokespeople** for RIDE. They help spread the goals of RIDE's Vision for Education through their professional networks and validating the importance of RIDE's Vision for Education through their endorsement and participation.

Supporting SIFE – Practical Approach

Inconsistent/Interrupted Formal Education- Practical Approach

This practical approach provides Rhode Island educators with actionable steps on practice and procedures to meet the social, emotional, linguistic, and academic needs of SIFE students.



Supporting SIFE – Practical Approach

Definition of SIFE

being over-age for their grade-level placement due to their limited or interrupted formal schooling

having needs that traditional ESL and bilingual programs may not be able to meet

having low or sometimes no literacy in their first language and/or in English and have little academic content-area knowledge

functioning two or more years below expected grade level both in native language literacy and numeracy compared to peers

needing extra supports and approaches that will help them catch up with their peers

being at risk of dropping out of school

Table of Contents

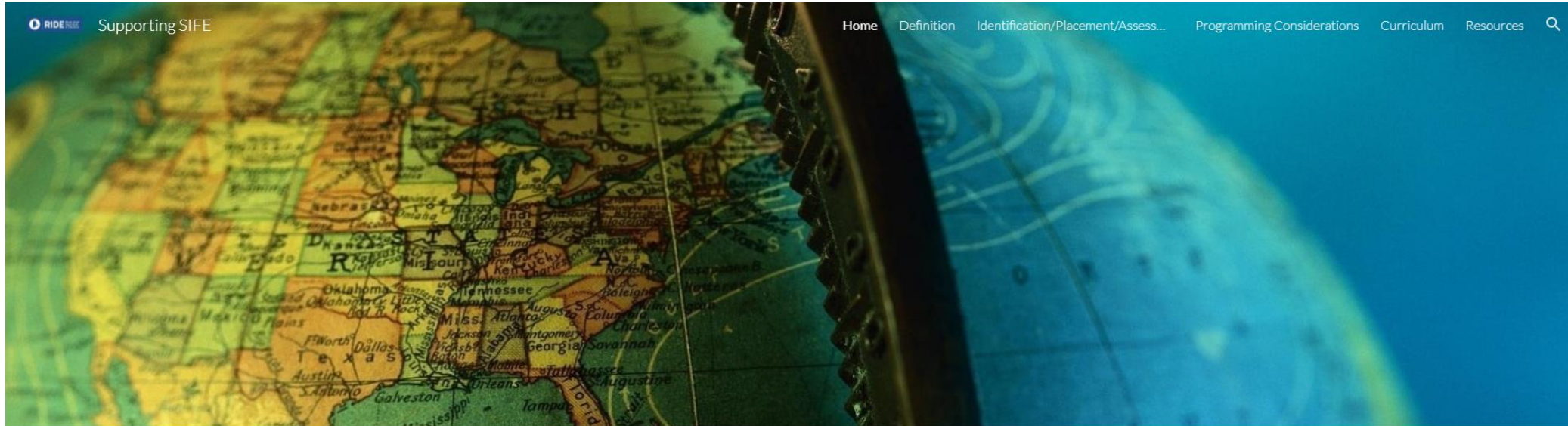
Introduction	3
Definition of SIFE	4
Factors Affecting SIFE	4
SIFE Pre-Screener & Interview	5
SIFE Background Inventory	7
Language and Life Skills Inventory	8
SIFE Achievement Plan	9
Appendix A - TIPS for Administrators of SIFE Programs	13
Appendix B - TIPS for Teachers of SIFE	15
Community Resources for SIFE	18
References	19

The definition and characteristics were developed using definitions of SIFE by DeCapua, Smathers, & Tang, 2009; Freeman & Freeman, 2002; U.S. Dept. of Education Newcomer Toolkit (2016); WIDA SIFE Focus (2015).

Supporting SIFE – Webpage

Inconsistent/Interrupted Formal Education - Webpage

This website provides Rhode Island educators with more resources to meet the social, emotional, linguistic, and academic needs of SIFE students.



Practical Tools for Supporting MultiLingual Learners (MLLs) with Inconsistent/Interrupted Formal Education (SIFE)

Supporting SIFE – Webpage

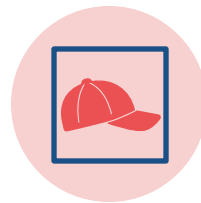
Practical Tools for Supporting MultiLingual Learners (MLLs) with Inconsistent/Interrupted Formal Education (SIFE)



HOME



DEFINITION



IDENTIFICATION/
PLACEMENT/ASS
ESSMENT

THIS PAGE INCLUDES
ASSESSMENT TOOLS
FOR IDENTIFICATION
AND PLACEMENT OF
SIFE.



PROGRAMMING
CONSIDERATIONS



CURRICULUM



RESOURCES

Thank you!

Flavia Molea Baker flavia.moleabaker@ride.ri.gov

